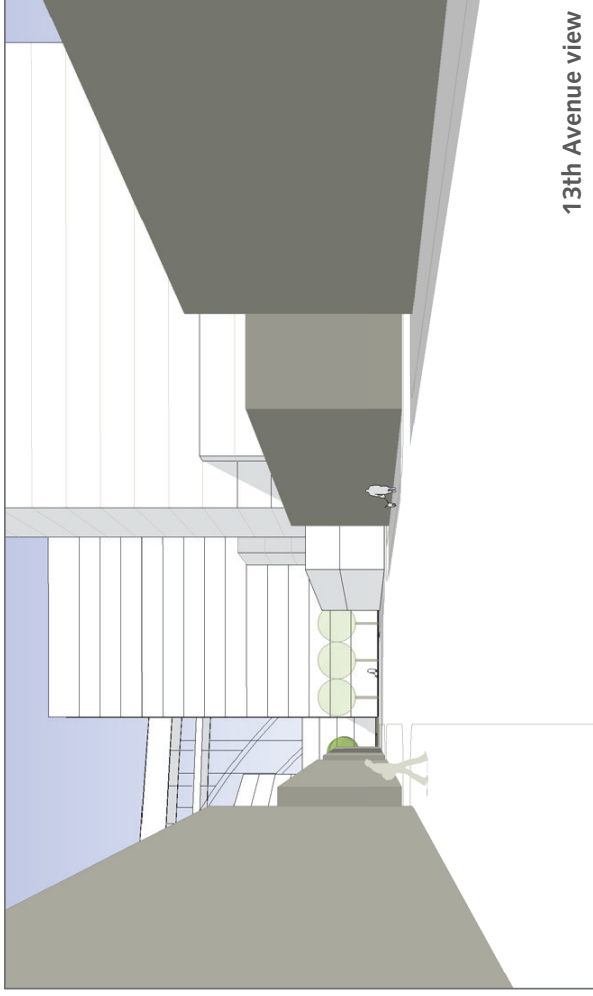


## North Campus: Alternate 2

In this variation, the use is assumed to be a combination of residential and office/mixed-use.

- As in the original plan, the plaza is north of Raleigh. The character of the plaza will be shaped by the adjacent buildings, which are all part of the North Campus.
- The office tower shown on Block 27 can be shifted just off 13th avenue, providing both a visual terminus and allowing glimpses of the bridge beyond.
- Block 29 is connected to the base of Block 27. Together they form a strong northeast edge to the campus, and can provide significant parking support for all the buildings in this zone.
- Block 27 crosses the 12th street corridor and its height is limited to 60' to maintain views to the Fremont Bridge.
- The Block 26 tower is positioned similar to Alternate 1.



13th Avenue view

